

SII 

**Teriostar**

**LP-1010 Series  
Digital Wide-Format  
Printers & Photocopiers**





# Network Printing

## HIGH PRODUCTIVITY

3.4 A0-size/minute

6.2 A1-size/minute

Our high-performance controller with simultaneous parallel data processing provides high speed output, even during continuous printing of different sizes.



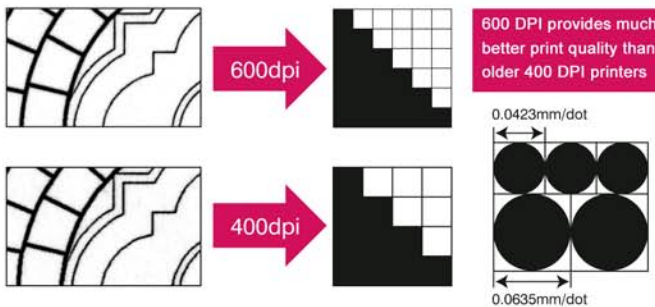
Output Conditions  
Sample Image: AutoCAD Living room A1  
Data size: HP-GL/2 approxi. 855kb  
Computer: Celeron 800Mhz, 192MB memory  
OS: Windows 2000 SP3  
Data Transfer: FTP



■ Time required for continuous 5 prints through Ethernet, FTP Transfer

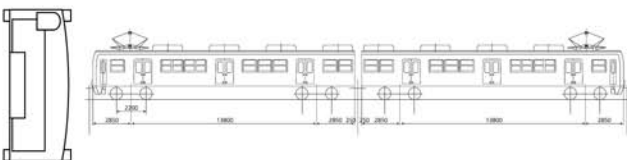
## HIGH RESOLUTION 600 DPI

The combination of 600 DPI and a single developer unit delivers superb density and excellent line acuity. Accurate copies and prints to-scale are assured with true 600 dpi printing.



## LONG PRINT LENGTHS

Long prints support applications such as automotive, shipbuilding, civil engineering, bridge building, military, and energy/industrial sites.

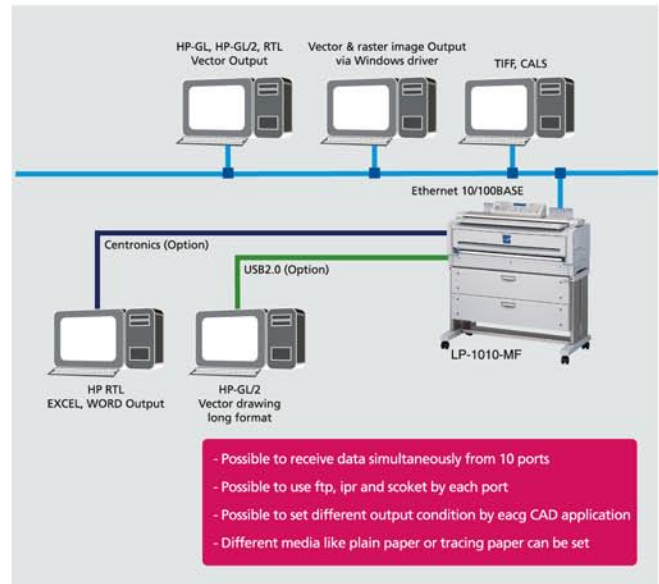


## NETWORKING INTERFACES

Interfaces supported include Ethernet (100Base-TX and 10Base-T), USB-2 and Centronics. All interfaces can receive data simultaneously.

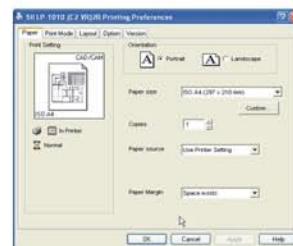
## PRINTER LANGUAGE SUPPORT

Compatible with HP-GL, HP-GL/2, HP-RTL, TIFF, and CALS.



## WINDOWS DRIVER

Includes a Windows driver that allows you to print from any application.



Windows Driver



Web Control

## WEB-BASED PRINTER CONTROL

Full printer control over the network using a standard web browser. Set up passwords for different levels of access and control

# Copying Scanning



## 600 DPI COPIES

High resolution scanning and copying is fast and easy - enlarge or reduce drawings while retaining quality. Scale from 25% to 400%.

## AUTOMATIC ROLL SELECTION

Choose between two different paper sizes, or let the LP-1010 automatically select the appropriate paper size for your drawing.

## EASY-TO-USE LARGE DISPLAY

The LP-1010 offers a large display which provides excellent visibility and easy operation of the entire copier. Allows you to change parameters quickly. Store up to 10 user-settings in memory.

## Fast Copy Speed

3.4 A0-size Copies/min.

6.2 A1-Size Copies/min.

## UP TO 20 CONTINUOUS COPIES

Make up to 20 continuous copies, or make an additional copy from a previous scanned drawing. Enlarge, reduce, change the density, or # of copies.

## DIGITAL SORTING

Copy different size drawings and automatically print them out the same size, or collate multiple copies.

## SCAN-TO-FILE

Instead of copying, you can scan directly to a file for offline use or for archiving drawings.



## USER-REPLACEABLE DRUM - NO SERVICE CONTRACT REQUIRED

The industry's first easy-to-replace photo cartridge drum in a wide-format LED printer allows you to replace your own photo drum - no service call required - just like a desktop laser printer! This dramatically lowers your ownership costs, lowers cost-per-copy costs, and reduces downtime.

## CLEAN HANDS TONER REPLACE-

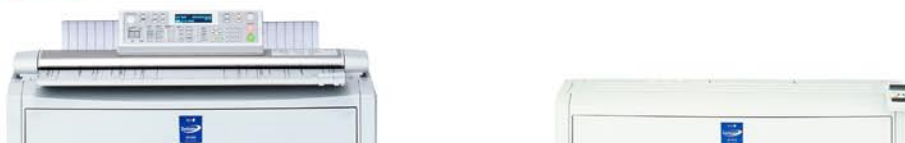


Toner cartridges use a containment system that prevents accidental toner spills - fast, easy, and clean.





# LP-1010 Series Digital Wide-Format Printers & Photocopiers



Specification		Multi-Function LED Printer/Scanner (Copier) LP-1010-MF	LED Printer LP-1010
Plotter	Imaging Method	Electrophotography (LED Exposure/ Dry Type Development (One Component)/ OPC Drum)	
	Output Resolution	600dpi	
	Continuous Output Speed	3.4 prints/min (A0-Size)	
	Warming-up Time	less than 8min.	
	Paper Feed	2-Rolls, manual feed	
	Paper Ejection	Front Side Ejection	
	Maximum Output Width (*1)	A0-Size (914mm)	
	Maximum Output Length	10m	
	Margin Sizes	3mm on right and left side, 5mm front side, 12mm rear side	
	Maximum Output Area	36 inches x 10m	
Controller	RAM (*2)	256MB (Standard)	
	HDD	20GB	
	Interface	Ethernet (10/100BASE-TX, USB2.0, Centronics)	
	Network Protocol	TCP/IP (ftp, lpr, socket)	
	Data Format	HP-GL, HP-GL/2, HP RTL, TIFF, CALS	
	Logical Port	10	
	Web Function	Yes	
	Scanner	Scanning Speed	2.36"/sec.
Scanner	Scanning Resolution	600dpi	-
Scanner	Maximum Scanning Width	Maximum 914mm / Minimum 210mm	-
Scanner	Maximum Scanning Length	10m (*4)	-
Scanner	Interface	Ethernet (Shared with Plotter)	-
Scanner	Delivery Function	Allows to preview image by BACK Function	-
Other	Dimensions	Plotter/Scanner All-in-one 1,150 (W) x 552 (D) x 1,240 (H) mm	1,150 (W) x 552 (D) x 1,064 (H) mm
	Weight	less than 210kg (*5)	less than 195kg (*5)
	Power Supply	110V Model: 120V-15A 220V Model: 230V-10A	110 V Model: 120V-15A 220V Model: 230V-10A
	Power Consumption	Operation: less than 1,400W, Standby: less than 80W	Operation: less than 1,350W, Standby: less than 60W

\*1: There may be some limitation of paper type and so on. \*2: Actual capacity less \*3: Except for toner and paper \*4: Limited by resolution/memory available \*5: Without packaging

### Standard Accessories

Power Cord, 3 Toner Cartridges, 1 Waste Toner Bottle, Paper Flange (for each roll holder),  
Installation CD-ROM (Windows Driver, Plot Share One DX, Manual), User Manual,  
Media (Paper: 100' roll, A0/A1/A3 size, 1 each)



Energystar Compliant Product

- Ethernet is a registered trademark of Xerox®
- HP-GL, HP-GL/2, and HP RTL are graphic languages developed by Hewlett-Packard Company.
- All other company names and products names are trademarks or registered trademarks of their respective companies.
- The brochure may be subject to change without prior notice.



Seiko I Infotech Inc.

8, Nakase 1-chome, Mihama-ku,  
Chiba-shi, Chiba 261-8507, Japan  
Tel: +81-43-211-1363  
Fax: +81-43-211-8709



ISO9001 Certified

<http://www.seiko-i.com>